



Newsletter • November 2015

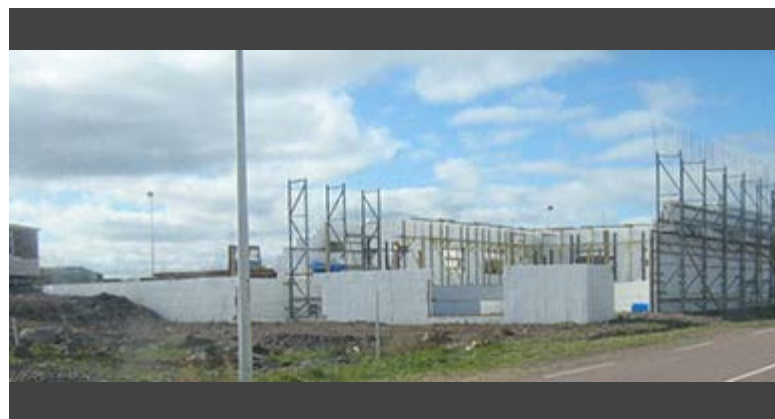
[unsubscribe](#) • [view online](#)



46-1313 Border Street
Winnipeg, MB
R3H 0X4
(204)694-0269

Issue 51

Please send comments to [Calla](#)



ABOUT US

Wholesale designed for real world people. Sexton Group Ltd is made up of a unique network of diversified and highly motivated Building Supply Dealers who value their independent identity.

[VISIT US](#)

SEXTON GROUP NEWS

Blown, Batt, Blanket, Spray & Rigid...

Types of Insulation and their uses:

There are four basic types of insulation: loose fill, batts and blankets, rigid board and spray foam. The most appropriate type of insulation to use will vary based on the type of construction, the extent of the rehabilitation planned and applicable code requirements.

- **Loose Fill Insulation**
 - Loose-fill insulation includes loose fibers or fiber pellets that are blown into building cavities or attics using special equipment. This is a great option for existing homes that need insulating. It usually fills nooks and crannies easier, reduces air leakage better, and

BUILD YOUR BUSINESS

How to pre-qualify a lead

When prospecting clients, find out if they're serious prospects or tire-kickers with this simple list of questions.

[READ MORE](#)

Selling a contracting business

If you intend to sell your contracting business one day, it needs value beyond the name place. Here's how to increase the value and make it worth selling.

provides better sound insulation.

- **Batt and Blanket Insulation**
 - This type of insulation is best suited to a standard joist, rafter, or stud spacing of 16 or 24 inches. Generally, batt insulation is the least expensive wall insulation material but requires careful installation for effective performance.
- **Spray Foam Insulation**
 - Spray foam insulation is commonly used for retrofits; good for irregularly shaped areas and around obstructions. Spray foam forms both an insulator and an air barrier, it can be cost competitive with batt insulation because it eliminates the steps for air-tightness detailing, (such as caulking, applying house wrap and vapor barrier, and taping joints).
- **Rigid Board Insulation**
 - This type of insulation is used for reroofing work on flat roofs, on basement walls and as perimeter insulation at concrete slab edges, and in cathedral ceilings.

Give us a call for all your insulation needs.

Build the Homes That Build Your Business

Dow's full house of insulation, air sealant and adhesive solutions work together to create an air-tight, moisture resistant structure from footer to lid, helping you build comfortable, durable, energy-efficient homes for your customers.



Dow Building Solutions
1-866-583-BLUE (2583)
www.insulateyourhome.ca

© The DOW Diamond Logo is a trademark of The Dow Chemical Company © 2014



IN THE NEWS

Green renovations don't have to be costly

Renovations of all kinds may offer the perfect opportunity to add energy efficiency to your home.

London Free Press

[READ MORE](#)

Windows 101

Here are some tips on what to look for when comparing prices on

[READ MORE](#)

PRODUCT INFORMATION

The A Richard Utility knife

The [A Richard Utility knife](#) with fixed blade allows you to change blades without opening the case. A twine-cutter cuts twine and cord without extending the blade. The A Richard Utility knife comes with storage for up to five blades, a rubberized handle for a better grip, a 3-position locking system, and a retractable blade.

[LEARN MORE](#)

GoBoard™:Tile Backer Board

Introducing the new ultra-light tile backer board from Johns Manville: GoBoard™. It's engineered for durability, yet is up to 80% lighter than cement boards. GoBoard™ is easy to handle and can be cut at the point of installation with a basic utility knife, without crumbling or disintegrating. Best of all, it has waterproofing built-in. [Click here](#) to find out more information about GoBoard.

[LEARN MORE](#)

windows for your home, wherever you are in Canada.

Ottawa Citizen

READ MORE

Mike Holmes: What you don't see matters

Celebrity builder, Mike Holmes, is recruiting homebuilders to his new association, Holmes Approved, which focuses on educating builders and homeowners on why quality building "behind the walls," is more important than cosmetic upgrades.

Calgary Herald

READ MORE

MONTHLY TIP

Battery Care Guide



To prolong the life of your batteries and maximize your on-site performance, here are a few tips on battery maintenance. Never allow your battery to go completely dead. When the tool begins to slow or labour, remove the battery from the tool and charge it completely. Never recharge a fully-charged battery. Always allow a hot battery to cool before charging. All new batteries need to be charged prior to use. For more about tools check out Makita.ca

Brought to you by:



Sexton Group Ltd.
46 - 1313 Border Street
Winnipeg, Manitoba R3H 0X4

Connect With Us!



This e-newsletter is an exclusive service for Sexton Group Ltd members.
Send your inquiries or comments to callak@sextongroup.com.

This message was deployed by Canadian Contractor on behalf of Sexton Group Ltd. and was sent to {EMAIL}.

You've received this email within compliance to CASL. You have either provided express consent, or implied consent has been derived under CASL regulations.

If you wish to unsubscribe from this enewsletter, please click [here](#).

